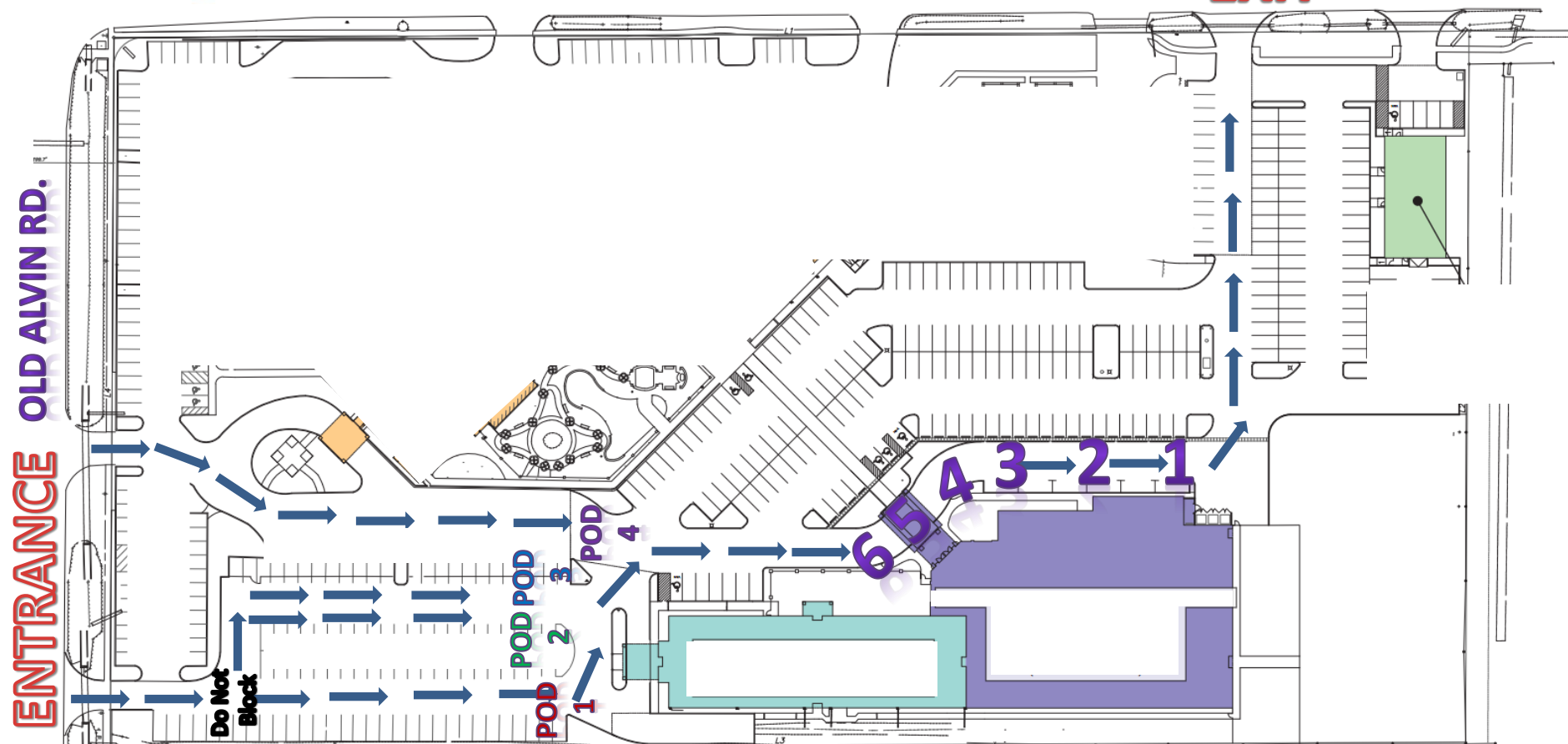




St. Helen Catholic School Afternoon Carline Pick-Up



**PLUM STREET
EXIT**



4 car lines feed into 6 pick-up locations. Siblings will be sitting with the youngest child. So if you are picking up siblings, follow the line for the youngest.

Students are split by PODs to abide by social distancing guidelines.

POD 1: Line 1 for grades Pk3/Pk4 will be waiting in the lobby.

POD 2: Line 2 for grades K-2 will be waiting in the cafeteria.

POD 3: Line 3 for grades 3-5 will be waiting in the gym.

POD 4: Line 4 for grades 6-8 will be waiting in the library.

- Hang your name tag on the rear view mirror.
- Follow traffic directors directions.
- No cell phone use in car line.
- Dismissal bell will ring at 2:50pm
- All late pick ups, after 3:15pm, will be charged \$1 a min. fee per student.
- Parents may not walk up to pick up students.
- To pick up early, you must sign them out BEFORE 2:30pm.
- If you are picking up another student, notify the school office before 2:30pm.



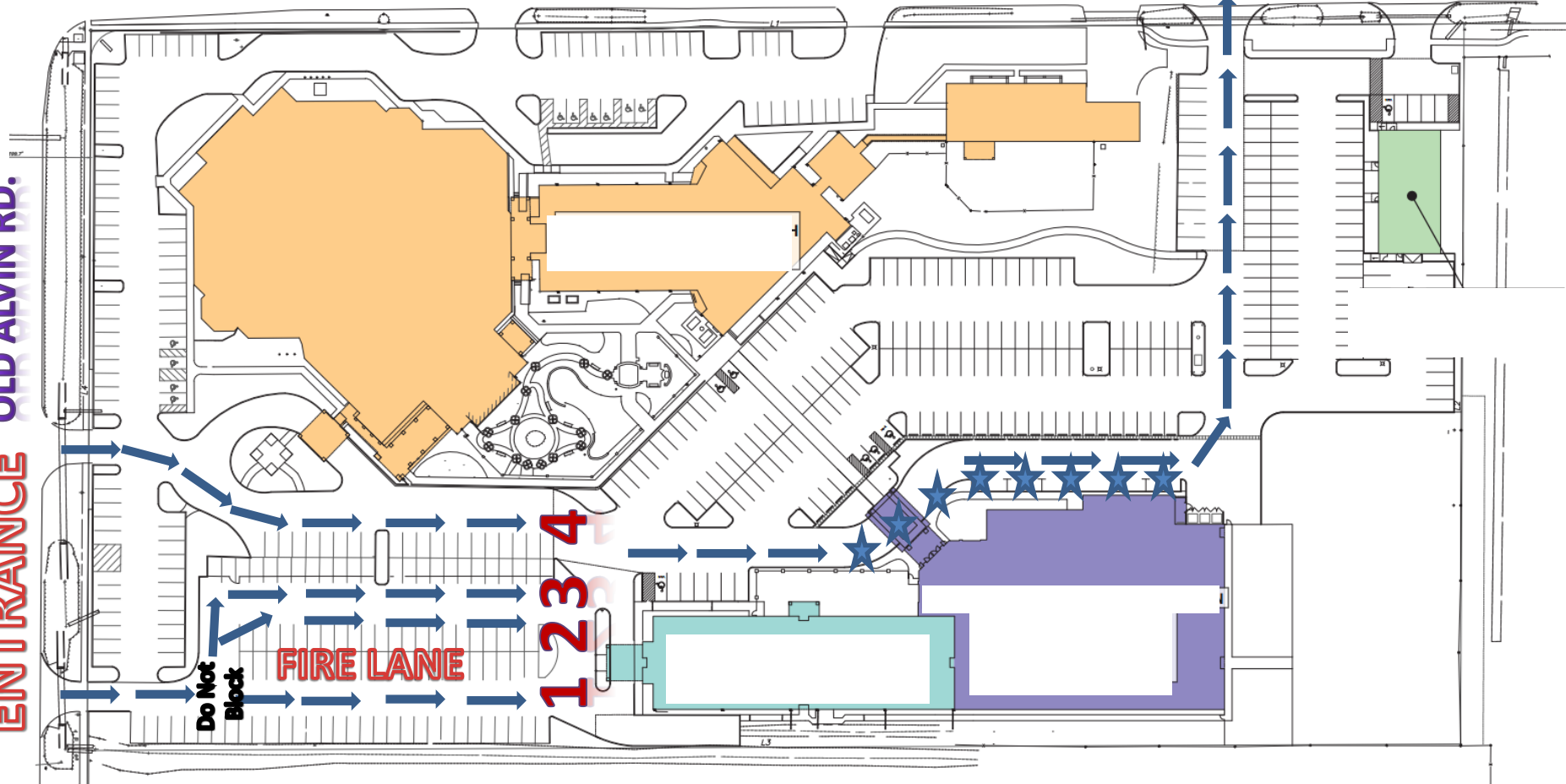
St. Helen Catholic School

Morning Carline Drop-Off



PLUM STREET
EXIT

ENTRANCE
OLD ALVIN RD.



4 car lines feed into 8 drop-off locations.

Due to the safety of our students and staff, parents may not walk up to the school building to drop-off their child until after the car line has completed.
If a student arrives after the 7:50 a.m. tardy bell, parents must bring their student in and check in with the receptionist.